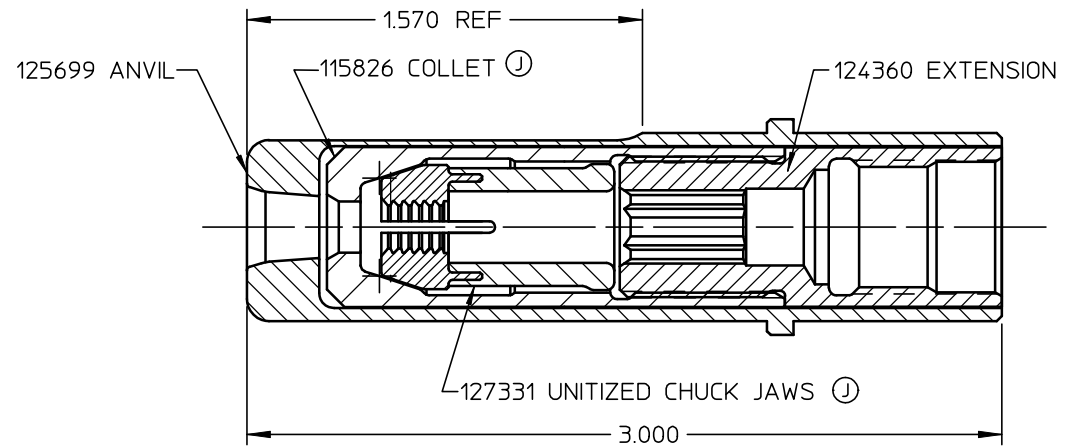
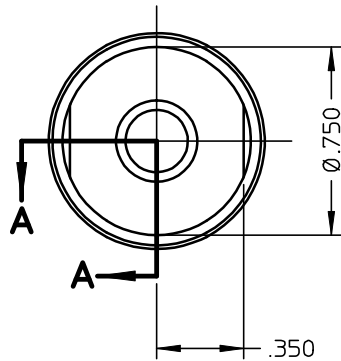


REV	DESCRIPTION	DATE
H	126001 CHUCK JAWS WAS 117760 AND UPDATE PICTORIALY COLLET	02/01/00
J	127331 JAW WAS 126001 JAW PICTORALY UPDATED 115826 COLLET	09/05/03

NOTES:

- 1 SHIP WITH O-RING P/N 500778.
- 2 BEFORE ATTACHING NOSE ASSEMBLY TO TOOL, INSTALL SUPPLIED O-RING ON TO THREAD RELIEF OF PULL PISTON.



SECTION A-A

FORM: KE104 REV C		By accepting this proprietary Huck drawing, recipient agrees not to reproduce or disclose any part thereof to any others without the written permission of Huck International, Inc.	
MATERIAL:	-	SPEC: -	TOLERANCES UNLESS OTHERWISE SPECIFIED
HARDNESS:	-		
HEAT TREAT:	-	SPEC: -	.XX, .XXX ±
SURF. TREAT:	-	SPEC: -	INT. COR. RADII
SURFACE FINISH NOT TO EXCEED		Ra	BREAK EDGES
IDENTIFICATION PER SPEC 42-311: ★ CHEMICAL ETCH			ANGLES ±
SURFACES TO BE ©, //, ⊕, ⊥, & ∟ WITHIN		T.I.R. FINAL ASSY: -	
		DET: PRS CK:	DATE: 07/29/94 SCALE: 2:1
		FOC.	B 99-1456
		FAC.	